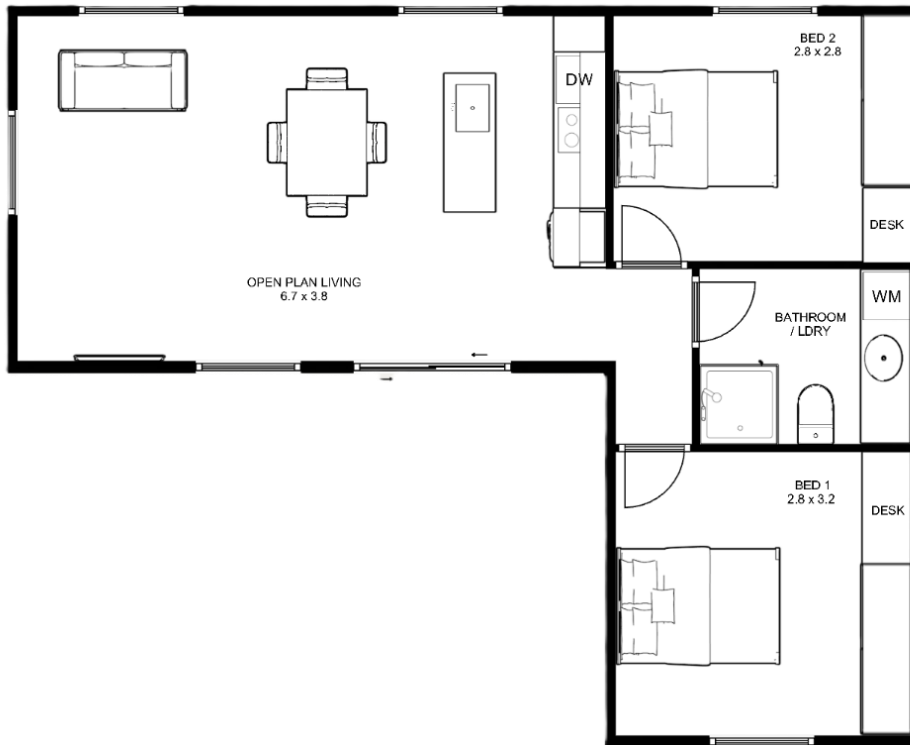




The Snowy

2 | 1



No Planning Permit Required - 3 Month On Site Build Time

This spacious modern comfort is ideally designed into a thoughtful corner footprint for added flexibility and outdoor architecture.

The intelligent two bedroom layout hosts a sprawling living space measuring an impressive 6.7 by 3.8 meters.

The heart of the home, a full-suite kitchen complete with an inviting island bench, sets the stage for culinary delights and social gatherings alike.

Meanwhile, two generously sized bedrooms await, each adorned with ample built-in robes and desks, offering both storage and productivity solutions for every inhabitant.

Highlights:

- Exquisite stone countertops throughout
- Integrated dishwasher
- Soft close cabinetry with metal chassis drawers
- Refrigerated reverse cycle heating and cooling
- European laundry
- Modern black appliances, tapware and handles
- 140mm thick architecturally superior load bearing insulated walls
- Double glazed windows and doors with keyed locks

Details

Width: 10.5 m
Length: 8.5 m
Total Area: 60 sqm (6.46 sq)



Specifications:

- High-performance Colourbond architectural cladding on roof and external walls, hard wearing and low maintenance
- 140mm thick architecturally superior load bearing insulated walls
- R Value of 3.4 to exterior walls
- R Value of 4.1 to roof
- 7 Star Energy Rating
- Skillion roof with raked ceilings
- Large window openings and well-lit interiors
- Window splashback in kitchen for the brightest culinary experience
- Powder coated aluminium double glazed windows and doors
- Keyed locks to all doors and windows
- Refrigerated reverse cycle heating and cooling
- Hybrid timber flooring with waterproof surface throughout living areas
- Carpeted bedrooms
- Tiled bathroom
- LED lighting throughout
- Stone countertops throughout
- Integrated dishwasher
- Soft close cabinetry with metal chassis drawers
- Modern black 600mm under bench oven
- Modern black 600mm induction cooktop
- Externally vented slide out rangehood
- Signature Black tapware and sinks
- Signature Black handles
- Full height pantry
- Full sized tiled shower with frameless shower screen
- Oversized 1.8m wide bathroom splashback mirror
- Hot water system
- European laundry
- Undermount seamlessly integrated washing machine provision
- Smoke alarm
- Large full feature built in wardrobes with mirror sliding doors